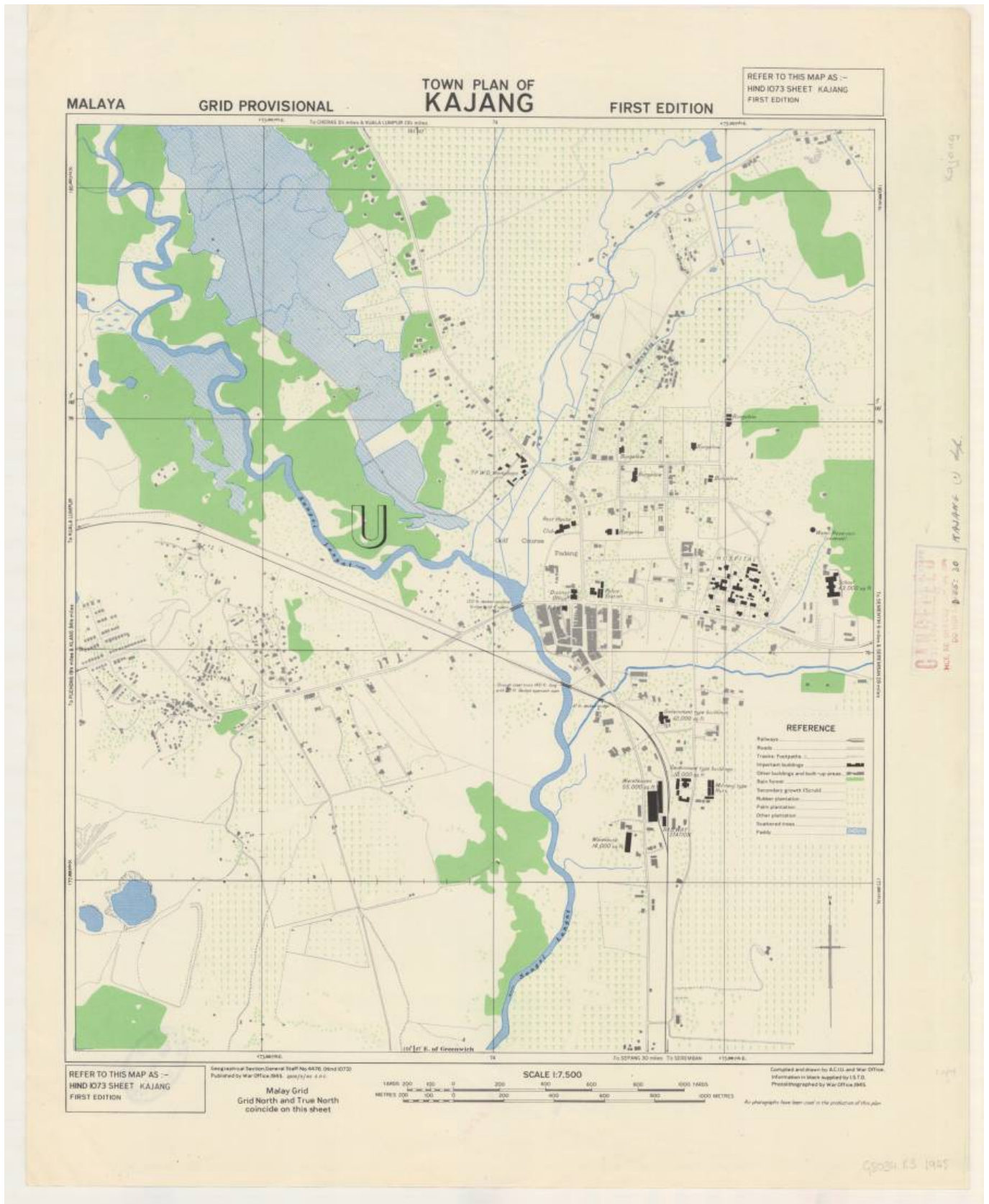


1940-an: Perang Dunia Kedua dan Selepasnya

Sebelumnya

- [1900-an: Pembangunan Kajang dan Sekitarnya](#)

Peta 1945



Peta lama Kajang (1945): "Scale: Scale 1:7 500 (E 101°47'/N 2°59'); Description: [London] : published by War Office, 1945; 1 map : col. ; 49 x 42 cm.; Notes: Town plan of Kajang showing transportation, water features, vegetation, cultivation, built-up areas and buildings. Relief shown of hachures. At top of map: Malaya. Prime meridian: Greenwich. "2,500/9/45 S.P.C."." (Great Britain. Royal Air Force. Central Interpretation Unit, 1945 @ National Library of Australia digitised item:

"Town plan of Kajang [cartographic material]/ compiled and drawn by A.C.I.U. and War Office").

From:

<https://kajang.pulasan.my/> - **Cebisan Sejarah Kajang**

Permanent link:

<https://kajang.pulasan.my/1940an?rev=1781169686>

Last update: **2026/06/11 17:21**

